

Nihon Suido Consultants Co., Ltd.

CORPORATE DATA

Company Profile

Company Name	Nihon Suido Consultants Co., Ltd.
URL	https://www.nissuicon.co.jp/en/
Date of Establishment	May 25, 1959
Share Capital	100 million yen
Number of Employees	Consolidated : 715 Non-Consolidated : 655 (as of December 31, 2024)
Bank Account	Sumitomo Mitsui Banking Corporation; Mizuho Bank, Ltd.; MUFG Bank, Ltd.; Resona Bank, Limited; and Sumitomo Mitsui Trust Bank, Limited
Listing	Tokyo Stock Exchange, Standard Market (261A)
Business Content	<ol style="list-style-type: none"> Arrangement, investigation, research, planning, design, construction supervision, facility operation, management, diagnosis, water quality inspection, economic and financial analysis and other consulting related to the following businesses in Japan and overseas <ol style="list-style-type: none"> Water supply, sewerage, and industrial water supply Flood control, water utilization, and environmental management of rivers, lakes, marshes and coastal waters Treatment of industrial wastewater and waste, etc. Architecture, urban and regional development Agricultural development Renewable energy-related Related to the preceding items <ol style="list-style-type: none"> Development, sales, rental, operation and maintenance of information processing systems Temporary staffing Contracting, construction and supervision of architectural, civil engineering and various plant works Procurement, sale, lease and rental of materials and equipment related to each of the preceding items, and sale and lease of old articles related to these items Any and all business incidental or related to the preceding items
Research Institutions	Central Research Institute

Officers

■ Directors (excluding those who are members of the Audit and Supervisory Committee) Representative Director and Chairperson NOMURA Yoshikazu Representative Director and President NAKANISHI Shinji Director KOISHIKAWA Nobuaki Director TANEICHI Naohito Outside Director OGAWA Kenichi	■ Corporate Officers KOISHIKAWA Nobuaki NOMURA Kyogo TANEICHI Naohito KONNO Kazuhiro SUGI Michio SAKAI Kazuyuki SATO Shinichi YOSHINARI Daigo DOMICHI Masaharu FUKUHARA Masaru GOTO Mitsuhiro KINKAI Hideki MIYAMOTO Katsutoshi MORINAGA Koji YAMAMOTO Seiji MASUDA Tamon IKEDA Kenji AKASAKA Kazutoshi
■ Directors Constituting Members of Audit and Supervisory Committee Director, Audit and Supervisory Committee Member HARU Koichiro Outside Director, Audit and Supervisory Committee Member TAKATA Hirohisa Outside Director, Audit and Supervisory Committee Member MATSUDA Yuki	

Group Companies

Nihon Suido Consultants Co., Ltd.

■ Head Office

Shinjuku Square Tower, 6-22-1, Nishi-Shinjuku,
Shinjuku-ku, Tokyo 163-1122, Japan
TEL +81-3-5323-6200 FAX +81-3-5323-6480



Riflex Co., Ltd.
(Rifu-cho, Miyagi-gun, Miyagi)

Sabo Engineering Co., Ltd.
(Kawagoe City, Saitama)

Nihon Suido Consultants Co., Ltd.
(Shinjuku-ku, Tokyo)

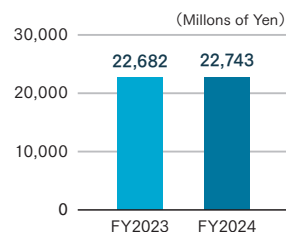
NSC TEC Co., Ltd.
(Shinjuku-ku, Tokyo)

io Co., Ltd. (Hino City, Tokyo)

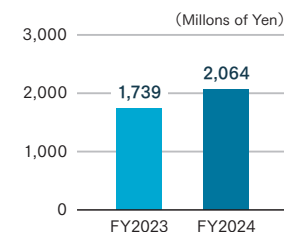
PT.DACREA Design And Engineering Consultants
(Jakarta Selatan, DKI Jakarta, Indonesia)

Financial Data (Non-Consolidated)

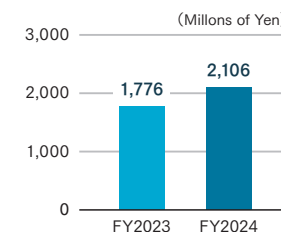
Orders Received



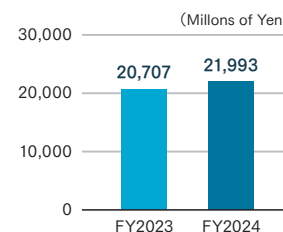
Operating Profit



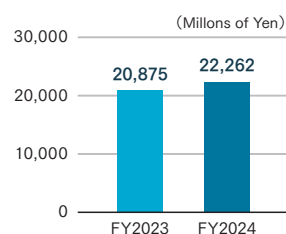
Ordinary Profit



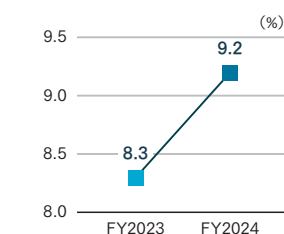
Total Assets



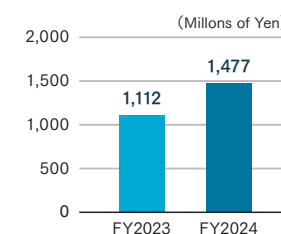
Net Sales



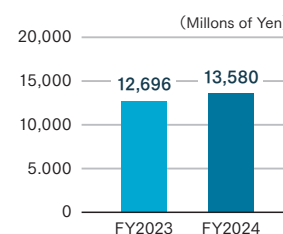
Operating Profit Margin



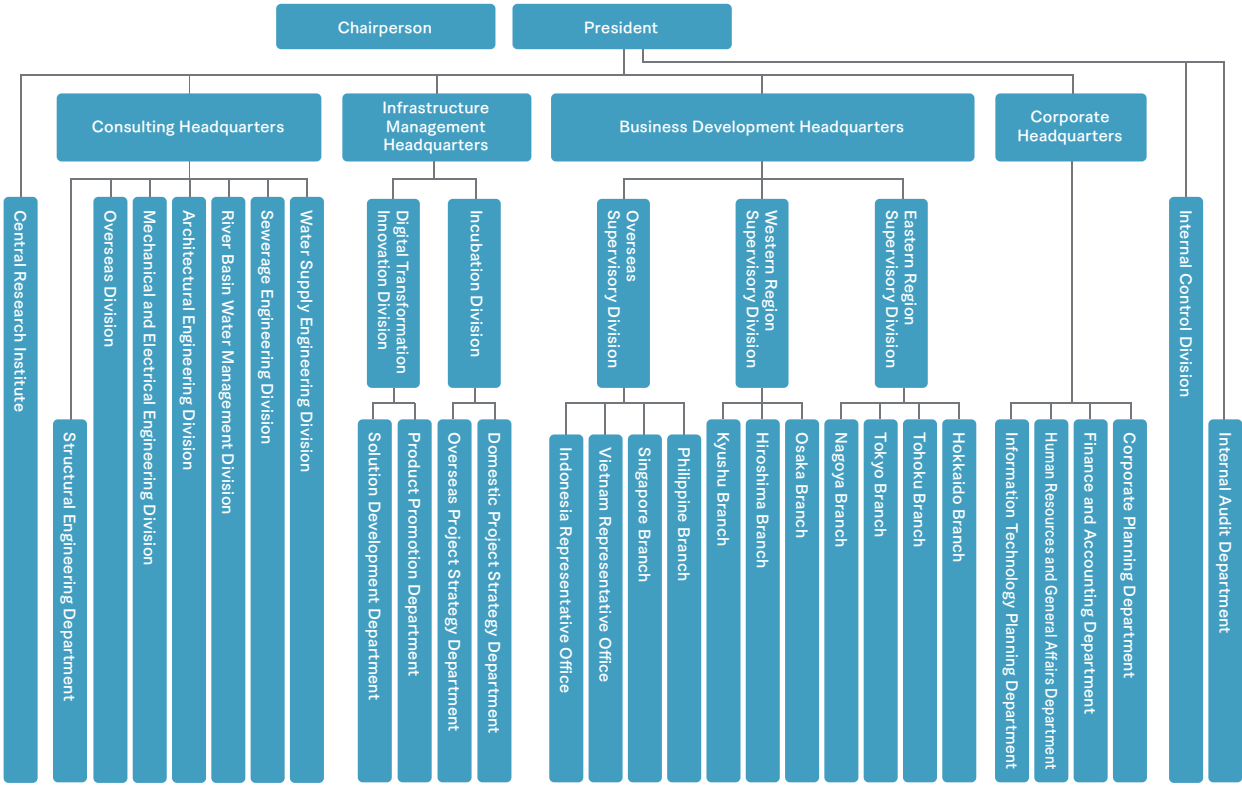
Net Profit



Net Assets



■ Organization Chart



■ Office Locations

Head Office / Central Research Institute / Tokyo Branch
Shinjuku Square Tower, 6-22-1, Nishi-Shinjuku, Shinjuku-ku,
Tokyo 163-1122, Japan
TEL. +81-3-5323-6200 FAX. +81-3-5323-6480

Hokkaido Branch
San Memoria, 1-1, Kita 3-jo Nishi, Chuo-ku, Sapporo City,
Hokkaido 060-0003, Japan
TEL. +81-11-281-2408 FAX. +81-11-281-2410

Tohoku Branch
Kashima Kogyo Bldg., 2-2-3, Honcho, Aoba-ku, Sendai City,
Miyagi 980-0014, Japan
TEL. +81-22-222-1101 FAX. +81-22-265-7634

Nagoya Branch
Atsuta Media Wing, 7-30, Gohonmatsu-cho, Atsuta-ku, Nagoya City,
Aichi 456-0016, Japan
TEL. +81-52-681-3311 FAX. +81-52-681-3282

Osaka Branch
Daido Seimei Esaka Bldg., 1-23-101, Esaka-cho, Suita City,
Osaka 564-0063, Japan
TEL. +81-6-6339-7300 FAX. +81-6-6385-3910

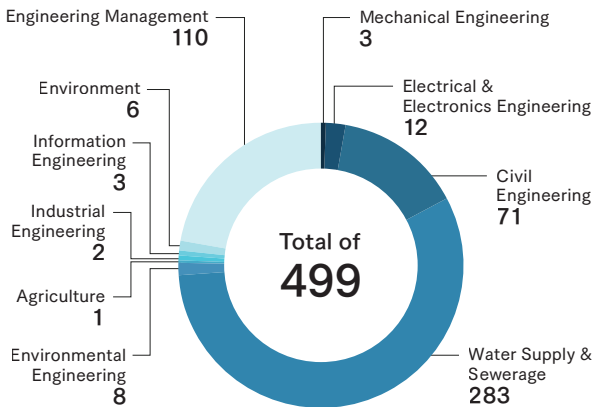
Hiroshima Branch
Hiroshima High Building21, 3-1, Kanayama-cho, Naka-ku, Hiroshima City,
Hiroshima 730-0022, Japan
TEL. +81-82-545-1045 FAX. +81-82-545-1405

Kyushu Branch
HAKATAGION CENTER PLACE, 7-20, Gion-machi, Hakata-ku,
Fukuoka City, Fukuoka 812-0038, Japan
TEL. +81-92-282-1354 FAX. +81-92-282-1358

In addition to the above:
53 Domestic Offices, 2 Overseas Branches, and 2 Overseas Representative Offices.

■ Number of Qualified Employees

Professional Engineers



RCCM

